



Manitou Mfg. Co.

STAMPED STEEL BEARING HOUSING SPECIALISTS

**Your Complete Source for Stamped Steel
Bearing housings & Bronze Bushed Bearing Assemblies**



• Stamped Steel Bearing Housings • Bronze Bushed and Plastic Bearings
Porous & Cast Hard Bronze Bushings • Buy Direct from the Manufacturer & SAVE! • Made in USA since 1946

FOR INSTANT ORDERING OR MORE INFORMATION CALL:

Toll Free: 1-800-894-1509 • Local: 651-429-4285 • Fax: 651-429-5765

Email: info@manitoumfg.com • Web Site: www.manitoumfg.com

P.O. Box 10526 • White Bear Lake, MN 55110

TABLE OF CONTENTS

Flanges,

Two-Bolt	Page 1
Three-Bolt	Page 2
Triangular Three-Bolt	Page 3
Four-Bolt	Page 4
Three and Four-Bolt Re-Lube	Page 5

Pillow Block Housing Sets

Snap-Together	Page 6
Non-Snap-Together	Page 7

Flush Mounts	Page 8-9
--------------------	----------

Rubber Boots	Page 9
--------------------	--------

Side Mounts

Junior Flange and Center Flange-Gee	Page 10-11
Two-Bolt Flange Side Mounts	Page 12
Four-Bolt Flange Side Mounts	Page 13

500 Series Pillow Blocks	Page 14
--------------------------------	---------

700 Series Heavy Duty Pillow Blocks	Page 15
---	---------

600 Series Flange-Gee Bearing Units	Page 16
---	---------

800 Series Heavy Duty Flange-Gee	Page 17
--	---------

Plastic Bearings

UHMW-PE Side Mounts	Page 18
UHMW-PE Bearing Inserts	Page 19
UHMW-PE Flush Mount Bearing Assemblies	Page 19

Take-Up Units--MSTU	Page 20
---------------------------	---------

Pillow Block Stands	Page 20
---------------------------	---------

CNC Turning and SolidWorks Design Services	Page 21
--	---------

Parts Made to Your Prints	Page 21
---------------------------------	---------

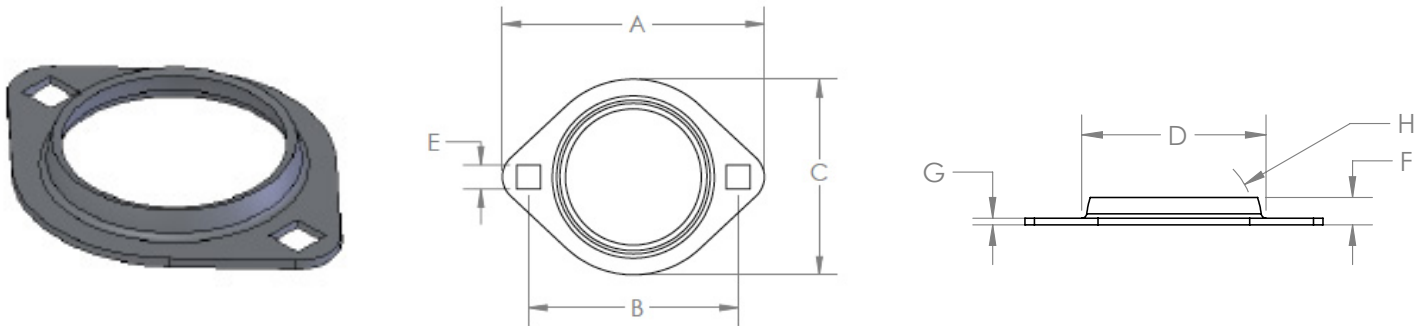
Porous Bronze Bushings	Page 22-23
------------------------------	------------

Cross Reference Chart	Page 24
-----------------------------	---------

Condition of Sale/Shipping/Return Policy	Page 25
--	---------

Two-Bolt Flanges For Standard Ball Bearing Units

Two-bolt flange housing units for standard ball bearings. One housing unit consists of two identical self-aligning flanges. Each pair of flanges has a spherical inside surface which mates with the spherical outer surface of the ball bearing ring to provide self-alignment in any direction. A frame opening is required for installation as the unit protrudes thru the frame, plate, or panel on which it is installed. The two-bolt flanges listed below are standard and are dimensionally the same as supplied by the leading ball bearing manufacturers.



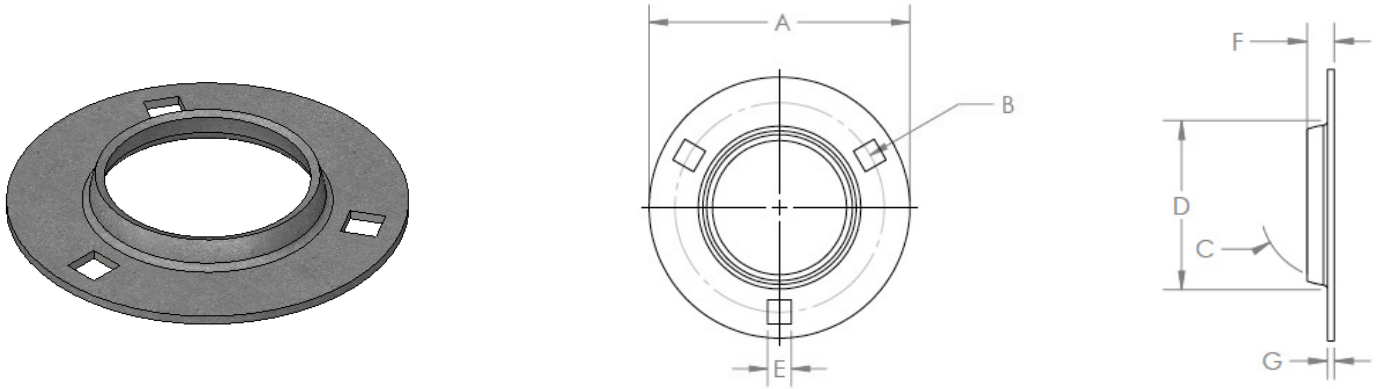
Part No.	Shaft Size	A	B	C	D	E	F	G	Bearing Dia.	Bolt Size	Steady Radial Load
35M-2	1/2, 9/16, 5/8	3-3/16	2-1/2	2-5/16	1-5/8	9/32	7/32	.062	35MM	1/4	350
40M-2	1/2, 9/16, 5/8	3-3/16	2-1/2	2-5/16	1-5/16	9/32	9/32	.075	40MM	1/4	600
40M-2-SS	Same as 40M-2 except made from grade 304 stainless steel										
42M-2	3/4	3-9/16	2-13/16	2-19/32	1-5/16	11/32	9/32	.065	42MM	5/16	400
47M-2	3/4	3-9/16	2-13/16	2-5/8	2-3/16	11/32	5/16	.083	47MM	5/16	700
47M-2-SS	Same as 47M-2 except made from grade 304 stainless steel, .083 thick										
52M-2	13/16, 7/8, 15/16, 1	3-3/4	3	2-51/64	2-3/8	11/32	11/32	.083	52MM	5/16	800
52M-2-SS	Same as 52M-2 except made from grade 304 stainless steel, .089 thick										
52M-2B	13/16, 7/8, 15/16, 1	3-3/4	3	2-51/64	2-13/32	11/32	3/8	.134	52MM	5/16	1000
62M-2	1-1/16, 1-1/8, 1-3/16, 1-1/4	4-7/16	3-9/16	3-5/16	2-13/16	13/32	3/8	.104	62MM	3/8	1100
62M-2B	1-1/16, 1-1/8, 1-3/16, 1-1/4	4-7/16	3-9/16	3-5/16	2-27/32	13/32	3/8	.134	62MM	3/8	1400
72M-2	1-1/4, 1-5/16, 1-3/8, 1-7/16	4-15/16	3-15/16	3-11/16	3-3/16	13/32	7/16	.104	72MM	3/8	1400
72M-2B	1-1/4, 1-5/16, 1-3/8, 1-7/16	4-15/16	3-15/16	3-11/16	3-3/16	13/32	1/2	.149	72MM	3/8	1400

Two-bolt flanges are not available with a grease fitting.

When ordering please specify whether you would like your parts unplated -R, standard zinc plated -ZP or plated with yellow dichromate -YZP.

Three-Bolt Flanges for Standard Ball Bearing Units

The spherical inside surface of each pair of flanges mates with the spherical outer surfaces of the ball bearing to provide self-alignment in any direction. The flanges listed are standard and are dimensionally the same as supplied by the leading ball bearing manufacturers. Two flanges are required to house a standard ball bearing unit, but Manitou sells them individually.

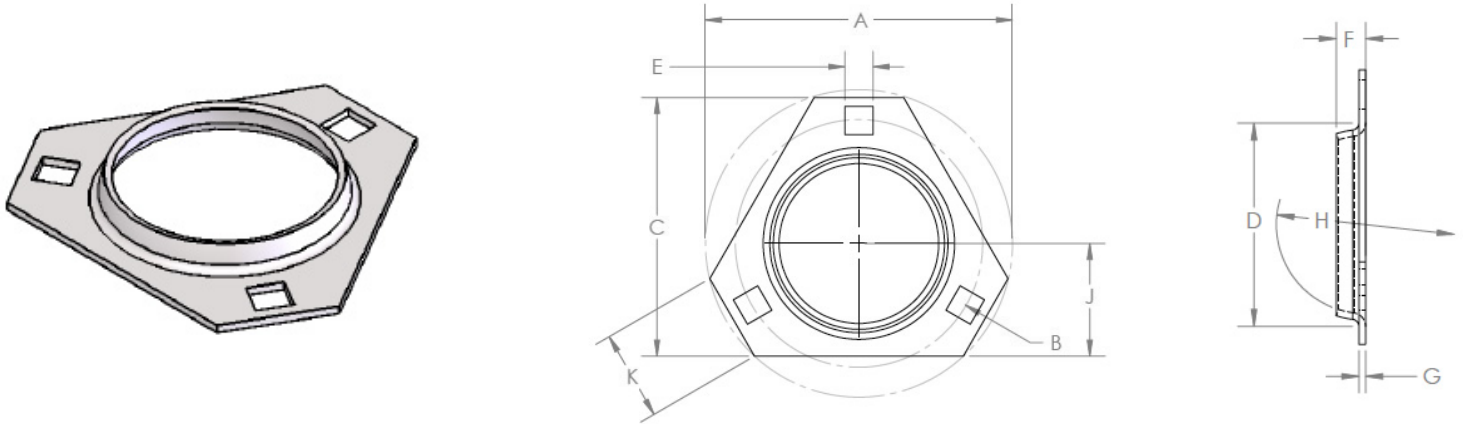


Part No.	Shaft Size	A Flange Dia.	B BHC	C Bearing Dia.	D Min. Frame Opening	E Hole	F Shoulder Height	G Thickness	Bolt Size
40MM-3	1/2, 9/16, 5/8	3-3/16	2-1/2	40MM	1-15/16	9/32	9/32	.075	1/4
47MM-3	3/4	3-9/16	2-13/16	47MM	2-3/16	11/32	5/16	.083	5/16
47MM-3B	3/4	3-9/16	2-13/16	47MM	2-3/16	21/64 Round	5/16	.083	5/16
52MM-3	13/16, 7/8, 15/16, 1	3-3/4	3	52MM	2-3/8	11/32	11/32	.083	5/16
52MM-3B	13/16, 7/8, 15/16, 1	3-3/4	3	52MM	2-3/8	21/64 Round	11/32	.083	5/16
52MM-3E	13/16, 7/8, 15/16, 1	3-3/4	3	52MM	2-3/8	11/32	3/8	.104	5/16
52MM-3-1	13/16, 7/8, 15/16, 1	3-3/4	3	52MM	2-3/8	11/32	25/64	.134	5/16
52MM-3H	13/16, 7/8, 15/16, 1	3-3/4	3	52MM	2-3/8	13/32 Round	11/32	.083	5/16
62MM-3	1-1/16, 1-1/8, 1-3/16, 1-1/4	4-7/16	3-9/16	62MM	2-13/16	13/32	11/32	.104	3/8
62MM-3-SS	1-1/16, 1-1/8, 1-3/16, 1-1/4	Same as 62MM-3 above except made from Grade 304 Stainless Steel							
62MM-3B	1-1/16, 1-1/8, 1-3/16, 1-1/4	4-7/16	3-9/16	62MM	2-13/16	13/32	13/32	.149	3/8
62MM-3GP-3	1-1/16, 1-1/8, 1-3/16, 1-1/4	4-7/16	3-9/16	62MM	2-13/16	13/32	25/64	.134	3/8
72MM-3	1-1/4, 1-5/16, 1-3/8, 1-7/16	4-13/16	3-15/16	72MM	3-3/16	13/32	3/8	.104	3/8
72MM-3GP	1-1/4, 1-5/16, 1-3/8, 1-7/16	4-13/16	3-15/16	72MM	3-3/16	13/32	7/16	.134	3/8
72MM-3C	1-1/4, 1-5/16, 1-3/8, 1-7/16	4-13/16	3-15/16	72MM	3-3/16	13/32	13/32	.149	3/8

When ordering please specify whether you would like your parts unplated -R, standard zinc plated -ZP or plated with yellow dichromate -YZP.

Triangular Three-Bolt Flanges for Standard Ball Bearing Units

These triangular three bolt flangettes are dimensionally the same as our standard round 40MM-3, 47MM-3, 52MM-3, 62MM-3 and 72MM-3 parts. They are used where space is limited. One housing unit consists of two identical self-aligning flanges. Each pair of flanges accommodates an industry standard metric spherical OD ball bearing. A frame opening is required for installation as the unit protrudes thru the frame, plate, or panel on which it is installed. The flanges listed below are standard and are dimensionally the same as supplied by the leading ball bearing manufacturers.



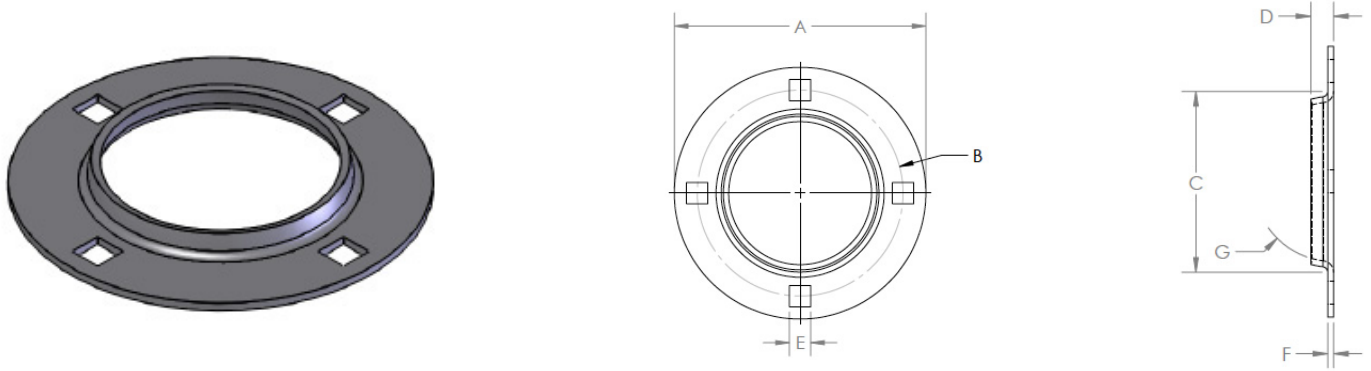
Part No.	Shaft Size	A	B	C	D Min. Frame Opening	E	F	G	Bearing Dia.	J	K
40MM-3T	1/2, 9/16, 5/8	3-9/32	2-1/2	2-23/32	1-5/16	9/32	9/32	.075	40MM	1-1/8	13/16
40MM-3T-SS	Same As 40MM-3T Except Made from Grade 304 Stainless										
47MM-3T	3/4	3-9/16	2-13/16	3	2-3/16	11/32	5/16	.083	47MM	1-5/16	1-1/16
47MM-3T-SS	Same as 47MM-3T above except made from Grade 304 Stainless Steel, .075 thick										
52MM-3T	13/16, 7/8, 15/16, 1	3-3/4	3	3-5/32	2-3/8	11/32	5/16	.083	52MM	1-3/8	1-3/32
52MM-3T-SS	Same as 52MM-3T above except made from Grade 304 Stainless Steel, .075 thick										
55MM-3T	1-1/16, 1-1/8, 1-3/16, 1-1/4	4-7/16	3-9/16	3-11/16	2-1/2	13/32	5/16	.075	55MM	1-1/2	1
62MM-3T	1-1/16, 1-1/8, 1-3/16, 1-1/4	4-7/16	3-9/16	3-11/16	2-13/16	13/32	11/32	.104	62MM	1-1/2	1
72MM-3T	1-1/4, 1-5/16, 1-3/8, 1-7/16	4-13/16	3-15/16	4-5/32	3-3/16	13/32	3/8	.104	72MM	1-3/4	1-17/64

Triangular flanges are not available with a grease fitting.

When ordering please specify whether you would like your parts unplated -R, standard zinc plated -ZP or plated with yellow dichromate -YZP.

Four-Bolt Flanges for Standard Ball Bearing Units

The spherical inside surface of each pair of flanges mates with the spherical outer surfaces of the ball bearing to provide self-alignment in any direction. The flanges listed are standard and are dimensionally the same as supplied by the leading ball bearing manufacturers. Two flanges are required to house a standard ball bearing unit, but Manitou sells them individually.

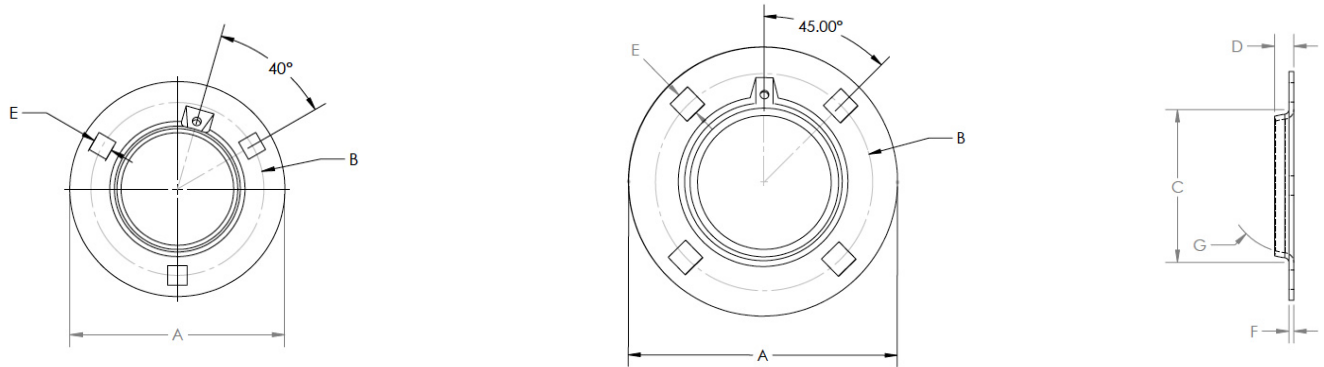


Part No.	Shaft Size	A Flange Dia.	B BHC	C Min. Frame Opening	D Shoulder Height	E Hole	F Thickness	G Bearing Dia.	Bolt Size
62MM-4	1-1/16, 1-1/8, 1-3/16, 1-1/4	4-7/16	3-9/16	2-13/16	11/32	13/32	.104	62MM	3/8
72MM-4	1-1/4, 1-5/16, 1-3/8, 1-7/16	4-13/16	3-15/16	3-3/16	3/8	13/32	.104	72MM	3/8
80MM-4	1-1/2, 1-9/16	5-13/16	4-11/16	3-9/16	13/32	17/32	.134	80MM	1/2
80MM-4SQ	1-1/2, 1-9/16	4-3/4 Square	4-11/16	3-9/16	9/16	17/32	.134	80MM	1/2
80MM-4GP	1-1/2, 1-9/16	5-13/16	4-11/16	3-5/8	5/8	17/32	.149	80MM	1/2
85MM-4	1-5/8, 1-11/16, 1-3/4	5-7/8	4-3/4	3-13/16	7/16	17/32	.134	85MM	1/2
85MM-4GP	1-5/8, 1-11/16, 1-3/4	5-7/8	4-3/4	3-13/16	5/8	17/32	.149	85MM	1/2
85MM-4BSQ	1-5/8, 1-11/16, 1-3/4	4-3/4 Square	4-3/4	3-13/16	9/16	17/32	.149	85MM	1/2
85MM-4GP-3	1-5/8, 1-11/16, 1-3/4	5-7/8	4-3/4	3-13/16	21/32	17/32	.179	85MM	1/2
87MM-4		5-3/4	4-3/4	3-7/8	21/32	17/32 & 37/64	.134	87MM	1/2
90MM-4	1-13/16, 1-7/8, 1-15/16	6-1/8	5	4	7/16	17/32	.149	90MM	1/2
90MM-4GP	1-13/16, 1-7/8, 1-15/16	6-1/8	5	4	7/16	17/32	.164	90MM	1/2
90MM-4BSQ	1-13/16, 1-7/8, 1-15/16	5-1/8 Square	5	4	9/16	17/32	.164	90MM	1/2
90MM-4GP-3	1-13/16, 1-7/8, 1-15/16	6-1/8	5	4	21/32	17/32	.179	90MM	1/2
100MM-4	2, 2-1/16, 2-1/8, 2-3/16	6-9/16	5-7/16	4-7/16	15/32	17/32	.149	100MM	1/2
100MM-4GP	2, 2-1/16, 2-1/8, 2-3/16	6-9/16	5-7/16	4-7/16	15/32	17/32	.164	100MM	1/2
100MM-4GP-4	2, 2-1/16, 2-1/8, 2-3/16	6-9/16	5-7/16	4-7/16	11/16	17/32	.194	100MM	1/2

When ordering please specify whether you would like your parts unplated -R, standard zinc plated -ZP or plated with yellow dichromate -YZP.

Relube Three & Four Bolt Flanges for Standard Ball Bearing Units

These relube flanges are used where additional lubrication is required. For example, where dust, dirt, excessive moisture, or other contaminants are present. The flange with the grease fitting has an inner grease groove, which allows the grease to enter the holes in the outer ring of the ball bearing. The other mating flange has a similar grease groove, so the ball bearing can be reversed, and still be lubricated.



Part No.'s for Mating Pairs										
Flange w/Fitting "G"	Flange wo/Fitting "GP"	Shaft Size	A Flange Dia.	B Flange Dia.	C Min. Frame Opening	D Shoulder Height	E Hole	F Thick	G Bearing Dia.	Bolt Size
47MM-3G	47MM-3GP	3/4	3-9/16	2-13/16	2-3/16	11/32	11/32	.075	47MM	5/16
52MM-3G	52MM-3GP	13/16, 7/8, 15/16, 1	3-3/4	3	2-3/8	11/32	11/32	.083	52MM	5/16
52MM-3G-1	52MM-3GP-1	13/16, 7/8, 15/16, 1	3-3/4	3	2-3/8	25/64	11/32	.134	52MM	5/16
62MM-3G	62MM-3GP	1-1/16, 1-1/8, 1-3/16, 1-1/4	4-7/16	3-9/16	2-13/16	3/8	13/32	.104	62MM	3/8
62MM-3G-3	62MM-3GP-3	1-1/16, 1-1/8, 1-3/16, 1-1/4	4-7/16	3-9/16	2-13/16	25/64	13/32	.134	62MM	3/8
62MM-3G-SS	62MM-3GP-SS	Same as 62MM-3G and 62MM-3GP above except made from grade 304 Stainless Steel								
72MM-3G	72MM-3GP	1-1/4, 1-5/16, 1-3/8, 1-7/16	4-13/16	3-15/16	3-3/16	7/16	13/32	.134	72MM	3/8
80MM-4G	80MM-4GP	1-1/2, 1-9/16	5-13/16	4-11/16	3-9/16	5/8	17/32	.149	80MM	1/2
85MM-4G	85MM-4GP	1-5/8, 1-11/16, 1-3/4	5-7/8	4-3/4	3-13/16	5/8	17/32	.149	85MM	1/2
85MM-4G-3	85MM-4GP-3	1-5/8, 1-11/16, 1-3/4	5-7/8	4-3/4	3-13/16	21/32	17/32	.179	85MM	1/2
90MM-4G	90MM-4GP	1-13/16, 1-7/8, 1-15/16	6-1/8	5	4	1/2	17/32	.164	90MM	1/2
90MM-4G-3	90MM-4GP-3	1-13/16, 1-7/8, 1-15/16	6-1/8	5	4	17/32	17/32	.179	90MM	1/2
100MM-4G	100MM-4GP	2, 2-1/16, 2-1/8, 2-3/16	6-9/16	5-7/16	4-7/16	21/32	17/32	.164	100MM	1/2
100MM-4G-4	100MM-4GP-4	2, 2-1/16, 2-1/8, 2-3/16	6-9/16	5-7/16	4-7/16	11/16	17/32	.194	100MM	1/2

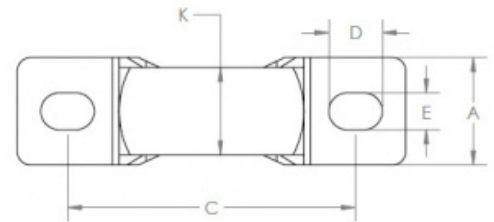
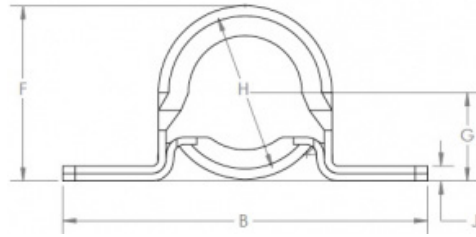
The standard fitting supplied is a straight press in zerk. Threaded, 45, 65 and 90 degree zerk's available upon request.

When ordering please specify whether you would like your parts unplated -R, standard zinc plated -ZP or plated with yellow dichromate -YZP.

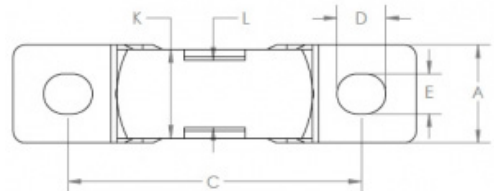
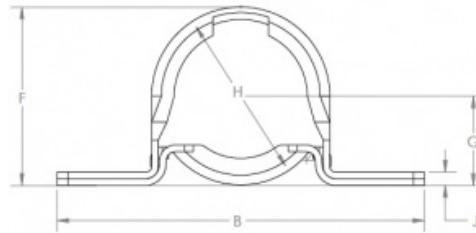
Snap-Together Heavy Duty Steel Pillow Block Sets for Standard Ball Bearing Units

These units consist of a two-piece heavy gauge steel housing which allows the ball bearings initial self-alignment. The housings listed below are standard and are dimensionally similar to those supplied by the leading ball bearing manufacturers. These parts finished with clear zinc plating for corrosion resistance.

Our Heavy Duty Steel Pillow Block sets are made from heavier gauge steel than the standard. These units are further strengthened by the turned down edges of both the top and bottom straps. These same edges will serve to retain the rubber boot when boots are used for sound deadening.



Part No.	Shaft Size	A	B	C	D	E	F	G	H	J	K
40MPB-ST-ZP	1/2, 9/16, 5/8	1	3-5/8	2-11/16	1/2	11/32	1-3/4	7/8	40MM	.15	13/16
47MPB-ST-ZP	3/4	1	4-1/8	3	1/2	13/32	2-1/16	1	47MM	.15	29/32
52MPB-ST-ZP	13/16, 7/8, 15/16, 1	1-1/8	4-1/2	3-3/8	9/16	13/32	2-7/32	1-1/8	52MM	.21	1
62MPB-ST-ZP	1-1/16, 1-1/8, 1-3/16, 1-1/4	1-1/4	4-7/8	3-3/4	9/16	13/32	2-5/8	1-5/16	62MM	.24	1-3/16
72MPB-ST-ZP	1-1/4, 1-5/16, 1-3/8, 1-7/16	1-5/16	5-3/4	4-1/4	3/4	17/32	3-1/8	1-9/16	72MM	.24	1-7/32

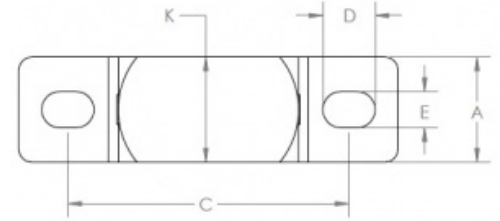
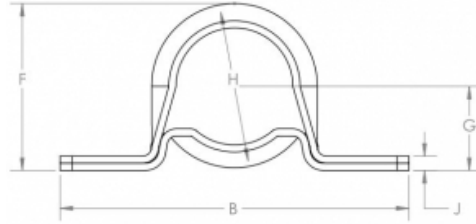


Zinc Plated · Notched for easy set screw access

Part No.	Shaft Size	A	B	C	D	E	F	G	H	J	K	L
40PBM-HR-N-ZP	1/2, 9/16, 5/8	1	3-5/8	2-11/16	1/2	11/32	1-3/4	7/8	40MM	.15	13/16	7/64 X 1/2
47PBM-HR-N-ZP	3/4	1	4-1/8	3	1/2	13/32	2-1/16	1	47MM	.15	29/32	7/64 X 5/8
52PBM-HR-N-ZP	13/16, 7/8, 15/16, 1	1-1/8	4-1/2	3-3/8	9/16	13/32	2-7/32	1-1/8	52MM	.21	1	9/64 X 3/4
62PBM-HR-N-ZP	1-1/16, 1-1/8, 1-3/16, 1-1/4	1-1/4	4-7/8	3-3/4	9/16	13/32	2-5/8	1-5/16	62MM	.24	1-3/16	11/64 X 7/8
72PBM-HR-N-ZP	1-1/4, 1-5/16, 1-3/8, 1-7/16	1-5/16	5-3/4	4-1/4	3/4	17/32	3-1/8	1-9/16	72MM	.24	1-7/32	3/16 X 1

Stainless Steel • Notched for easy set screw access

Part No.	Shaft Size	A	B	C	D	E	F	G	H	J	K	L
40PBM-SS-N	1/2, 9/16, 5/8	1	3-5/8	2-11/16	1/2	11/32	1-3/4	7/8	40MM	.15	13/16	7/64 X 1/2
47PBM-SS-N	3/4	1	4-1/8	3	1/2	13/32	2-1/16	1	47MM	.15	29/32	7/64 X 5/8
52PBM-SS-N	13/16, 7/8, 15/16, 1	1-1/8	4-1/2	3-3/8	9/16	13/32	2-7/32	1-1/8	52MM	.21	1	9/64 X 3/4
62PBM-SS-N	1-1/16, 1-1/8, 1-3/16, 1-1/4	1-1/4	4-7/8	3-3/4	9/16	13/32	2-5/8	1-5/16	62MM	.24	1-3/16	11/64 X 7/8

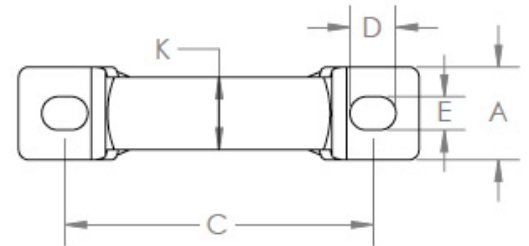
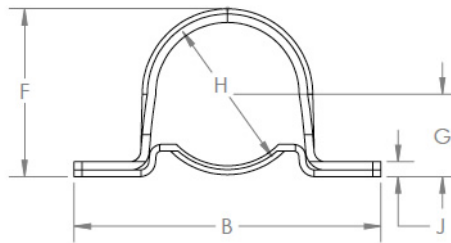


Stainless Steel • Extra wide for plastic, carbon and wood bearings

Part No.	Shaft Size	A	B	C	D	E	F	G	H	J	K
40PBM-SS-EW	1/2, 9/16, 5/8	1	3-5/8	2-11/16	1/2	11/32	1-3/4	7/8	40MM	.15	1
47PBM-SS-EW	3/4	1	4-1/8	3	1/2	13/32	2-1/16	1	47MM	.15	1
52PBM-SS-EW	13/16, 7/8, 15/16, 1	1-1/8	4-1/2	3-3/8	9/16	13/32	2-7/32	1-1/8	52MM	.21	1-1/8
62PBM-SS-EW	1-1/16, 1-1/8, 1-3/16, 1-1/4	1-1/4	4-7/8	3-3/4	9/16	13/32	2-5/8	1-5/16	62MM	.24	1-1/4

Non-Snap Heavy Duty Steel Pillow Block Sets for Standard Ball Bearing Units

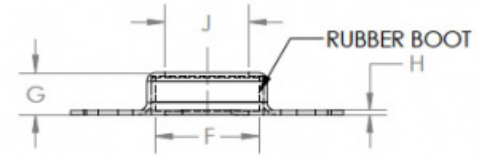
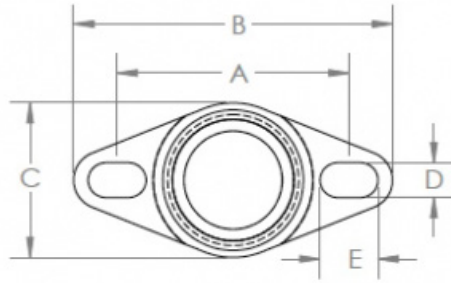
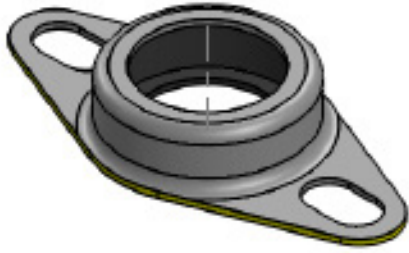
The Pillow Block Design is the only one that can be used on conveyors that go around curves. Our customers state that the ball bearing does not bind because this unit does not have vertical edges on the tops and bases.



Part No.	Shaft Size	A	B	C	D	E	F	G	H	J	K
40MPB-NS-ZP	1/2, 9/16, 5/8	1	3-5/8	2-11/16	1/2	11/32	1-3/4	7/8	40MM	.135	3/4
47MPB-NS-ZP	3/4	1	4-1/8	3	1/2	13/32	2-1/16	1	47MM	.18	7/8
52MPB-NS-ZP	13/16, 7/8, 15/16, 1	1-1/8	4-1/2	3-3/8	9/16	13/32	2-7/32	1-1/8	52MM	.21	3/4
62MPB-NS-ZP	1-1/16, 1-1/8, 1-3/16, 1-1/4	1-1/4	4-7/8	3-3/4	9/16	13/32	2-5/8	1-5/16	62MM	.24	7/8
72MPB-NS-ZP	1-1/4, 1-5/16, 1-3/8, 1-7/16	1-5/16	5-3/4	4-1/4	3/4	17/32	3-1/8	1-9/16	72MM	.24	1

Flush Mounts

Rubber Booted Flush Mounts

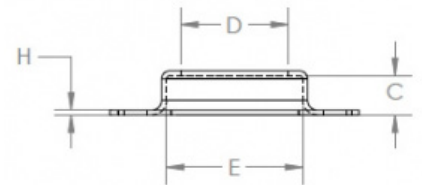
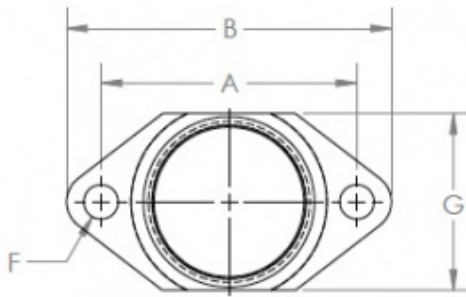
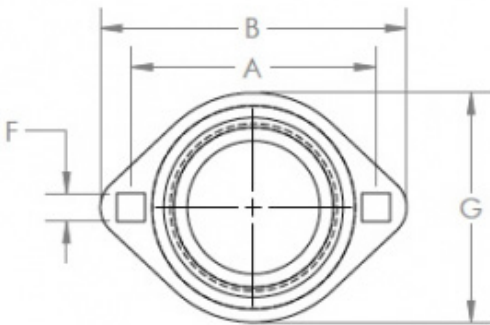


Flush mounted two-bolt units including static conductive rubber boots for noise and vibration reduction. Needs no frame opening. Designed for standard cylindrical OD ball bearings. Includes stamped housing and rubber boot only. Finished with clear zinc plating for corrosion resistance.

Part No. (Includes: 1 Stamped Housing & 1 Rubber Boot.)	Shaft Size	A	B	C	D	E	F Bearing Dia.	G	H	J	Rubber Boot No.	Stamped Housing No.
728-2-MFM	1/2, 9/16, 5/8, 11/16	3	4	2	.451	3/4	40MM	5/8	.062	1.270	R-728	SH-728-2
729-2-MFM	3/4	3-3/8	4-1/2	2-1/2	.451	3/4	47MM	3/4	.062	1.625	R-729	SH-730-2
730-2-MFM	13/16, 7/8, 15/16, 1	3-3/8	4-1/2	2-1/2	.451	3/4	52MM	3/4	.062	1.625	R-730	SH-730-2

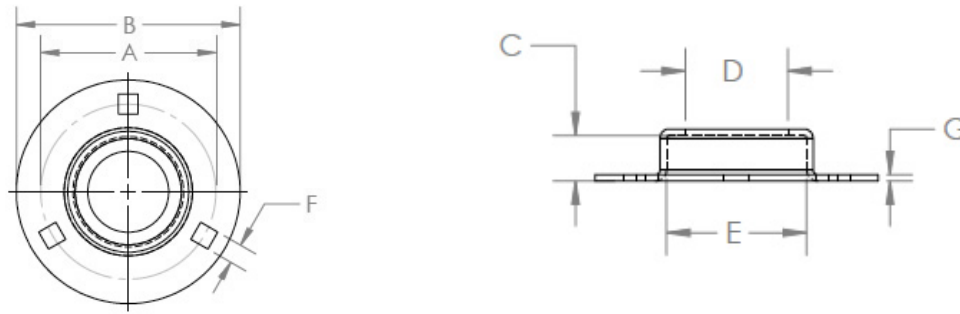
Two-Bolt Flush Mounts

Flush mounting's for your standard cylindrical O.D. ball bearings, or we can produce a plastic or bronze insert. No frame opening required. Flush mount units have same bolt spacing as corresponding standard flanges.



Part No.	Shaft Size	A	B	C	D	E	F	G	H
30-2-MFM		2-1/8	2-13/16	.354	.76	30MM	9/32	1-15/16	.066
40-2-MFM	1/2, 9/16, 5/8	2-1/2	3-3/16	.512	1.25	40MM	9/32	2-5/16	.074
47-2-MFM	3/4	2-13/16	3-9/16	.590	1.428	47MM	11/32	2-5/8	.074
52-2-MFM	13/16, 7/8, 15/16, 1	3	3-3/4	.590	1.625	52MM	11/32	2-51/64	.074
52-2-CFM	13/16, 7/8, 15/16, 1	3-1/4	4-1/8	.590	1.906	52MM	7/16 Round	2-1/4	.062
62-2-MFM	1-1/16, 1-1/8, 1-13/16, 1-1/4	3-9/16	4-7/16	.709	2.018	62MM	13/32	3-1/4	.089

Three-Bolt Flush Mounts



Part No.	Shaft Size	A	B	C	D	E	F	G
40-3-MFM	1/2, 9/16, 5/8	2-1/2	3-3/16	1.153	.512	40MM	9/32	.074
47-3-MFM	3/4	2-13/16	3-9/16	1.428	.590	47MM	11/32	.074
52-3-MFM	13/16, 7/8, 15/16, 1	3	3-3/4	1.625	.590	52MM	11/32	.074
62-3-MFM	1-1/16, 1-1/8, 1-13/16, 1-1/4	3-9/16	4-7/16	2.018	.709	62MM	13/32	.089

Rubber Ball Bearing Boots

Rubber boots are used in special applications, where the application requires minimum vibration and noise proof mounting. Oil resistant, static-conductive nitrile rubber boots are used.

Rubber Boot	Spherical OD of Ball Bearing	Manitou Pillow Block Set
R-4	40MM	47MPB-ST-ZP, 47PBM-HR-ZP, or 47PBM-SS-N
R-5	47MM	52MPB-ST-ZP, 52PBM-HR-ZP, or 52PBM-SS-N
R-6	52MM	62MPB-ST-ZP, 62PBM-HR-ZP, or 62PBM-SS-N
R-7	62MM	72MPB-ST-ZP



The Rubber Boot surrounds the ball bearing and fits in between the base and top strap of the Pillow Block Set.

A Pillow Block Set without turned down edges on the top strap, and turned up edges on the base will not work, as the rubber flows out of the unit in use when any thrust is applied.

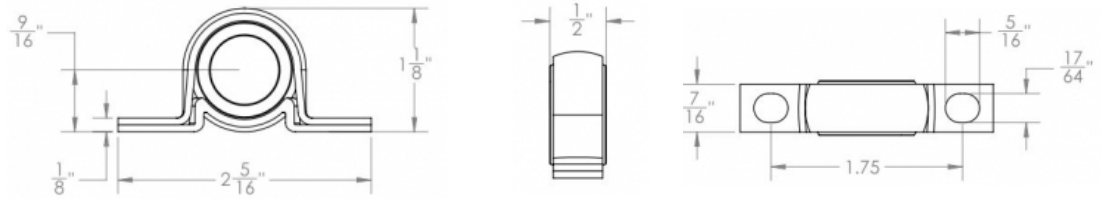
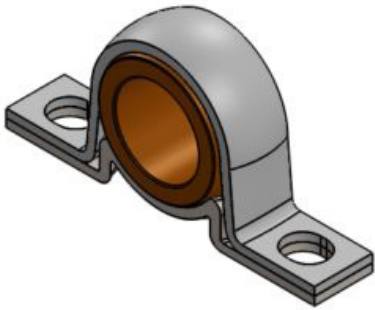
The above Manitou Pillow Block Sets have the proper edges on both base and top strap. This is the type of unit, where the base and top strap have the “Snap Together” feature.

Junior Mounts

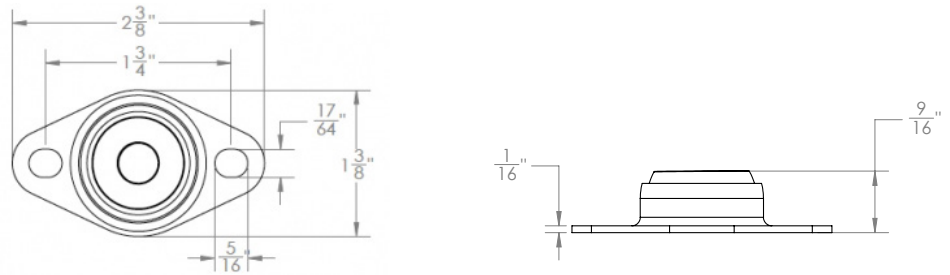
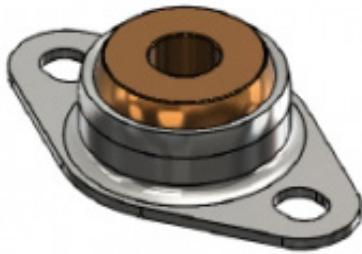
Porous Bronze Ball Units

The porous bronze bearing has an oil capacity of one-third of its volume and the oil is fed to shaft by self-metering capillary action. Additional lubrication is usually unnecessary in applications where these units are used, so no oil cups or grease fittings are needed. Porous bronze bearing units shown, but also available with UHMW-PE bearings.

150 Series Junior Pillow Block

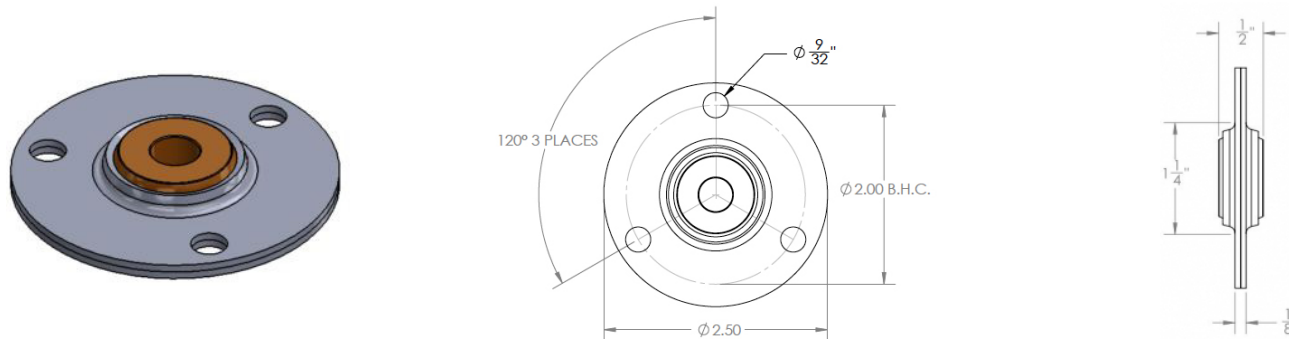


160 Series Junior Size Flange Side Mount



170 Series Center Flang-gee

This three bolt complete flang-gee bearing assembly shown has the same porous bronze bearing as the “150 and 160” Series. The steel housing consists of two identical self-aligning 16 gauge flanges. They are easily mounted in any position – horizontally, vertically, or at any angle. Only three ¼” bolts are required to attach to frame. This unit is stronger than the above type, but requires a opening frame so the assembly can protrude slightly thru the frame.



Features

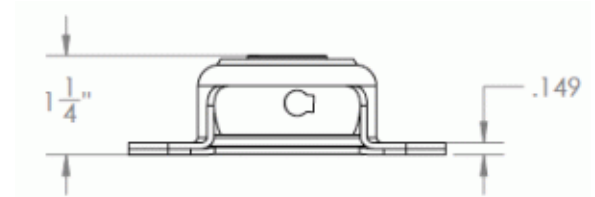
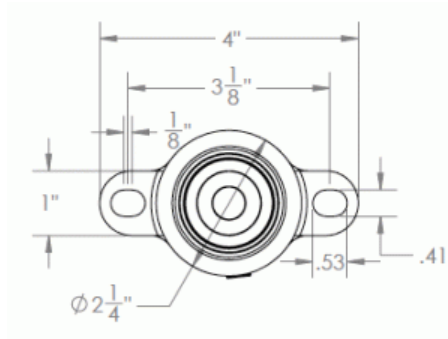
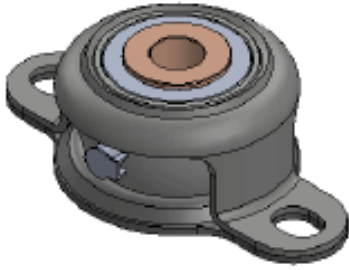
- **Self Aligning** – due to spherical construction of both the housing and bearing.
- **Easy Installation** – just bolt them down.
- **Rust resistant finish** – zinc plating on steel parts is attractive and rust resistant.
- **Immediate shipment from stock** – your order (large or small) will be shipped immediately.
- **UHMW-PE bearings also available**

Part Numbers: By Series, then Shaft Size

Series 150	Series 160	Series 170
150-3/8	160-3/8	170-3/8
150-1/2	160-1/2	170-1/2
150-5/8	160-5/8	170-5/8
150-19/32	160-19/32	170-19/32

Two-Bolt Flange Side Mounts

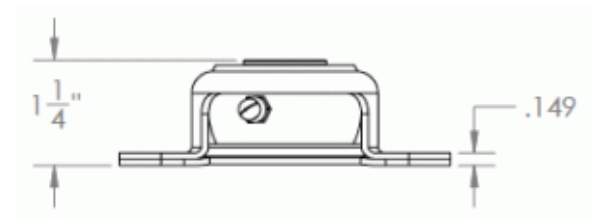
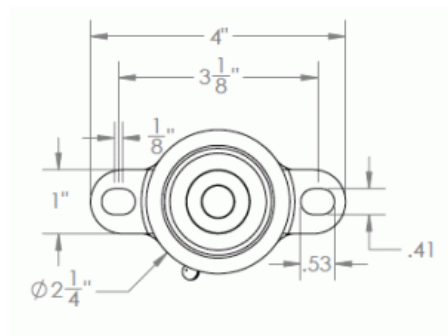
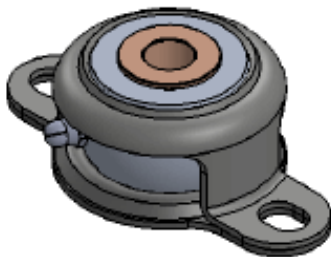
200 Series Equipped with oil cup



- **Easy Installation** – Just bolt them down
- **Self-Aligning** – Speeds production, cuts costs, improves performance.
- **Extra heavy gauge steel used in all top and bottom flanges** – Takes heavy thrust and shock
- **Immediate shipment from stock** – Your order (large or small) will be shipped immediately
- **Rust resistant finish** – Zinc plating on steel parts is attractive and rust resistant.
- **UHMW-PE bearings also available**

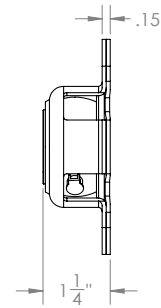
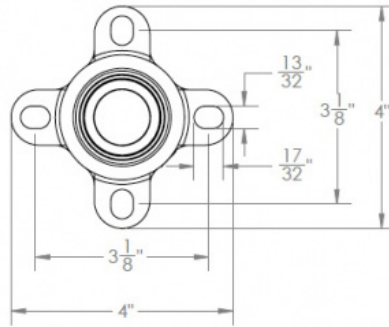
Shaft Size	Series 200	Series 250
1/2"	200-1/2	250-1/2
5/8"	200-5/8	250-5/8
3/4"	200-3/4	250-3/4
13/16"	200-13/16	250-13/16
7/8"	200-7/8	250-7/8
15/16"	200-15/16	250-15/16
1"	200-1	250-1

250 Series Equipped with threaded grease fitting



Four-Bolt Flange Side Mounts

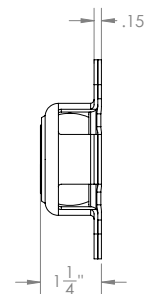
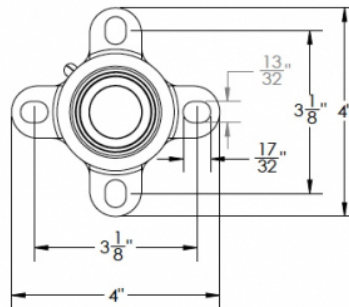
400 Series Equipped with oil cup



- **Easy Installation** – Just bolt them down
- **Self Aligning** – Speeds production, cuts costs, improves performance.
- **Extra heavy gauge steel used in all top and bottom flanges** – Takes heavy thrust and shock
- **Immediate shipment from stock** – Your order (large or small) will be shipped immediately
- **Rust resistant finish** – Zinc plating on steel parts is attractive and rust resistant.
- **UHMW-PE bearings also available**

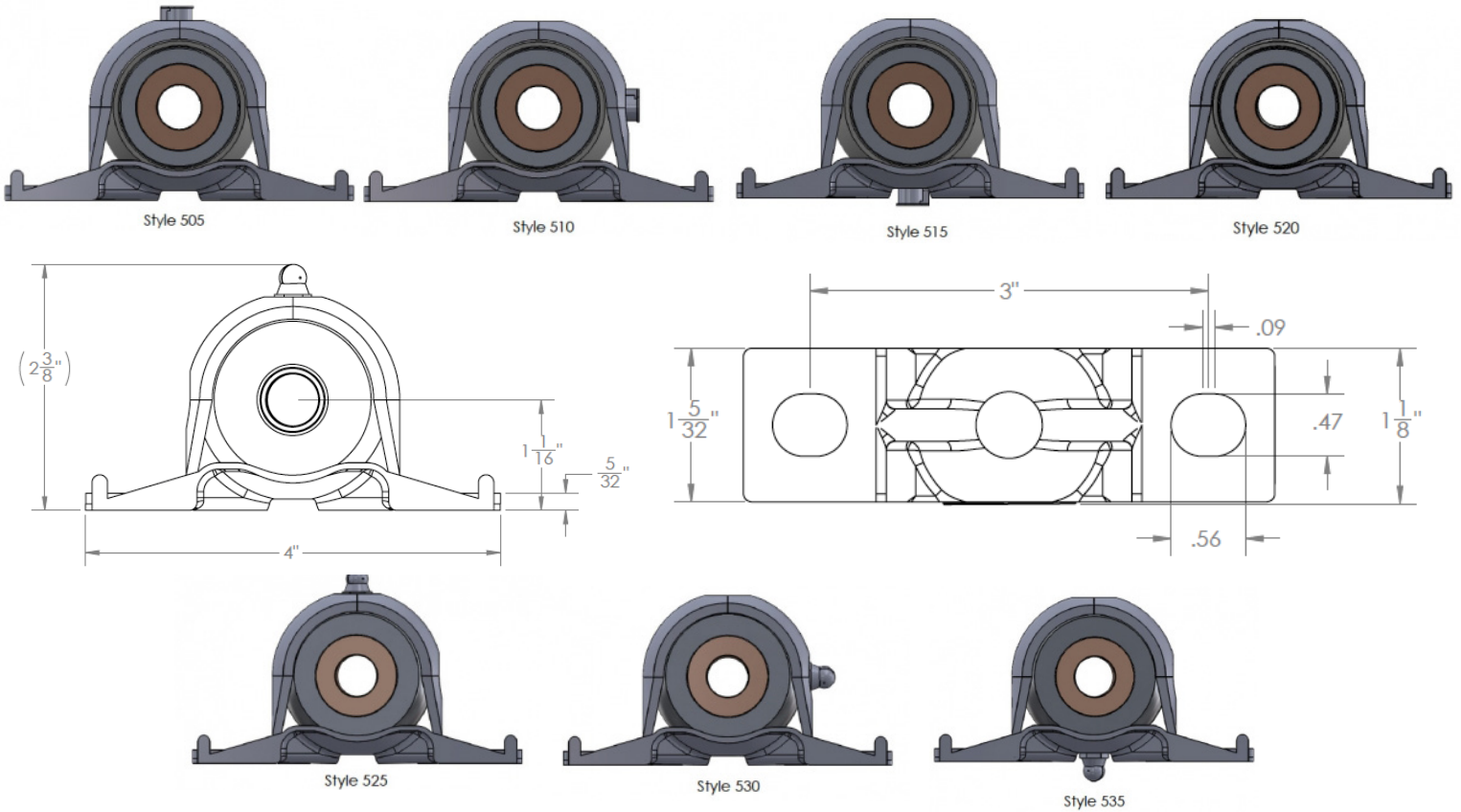
Shaft Size	Series 400	Series 450
1/2"	400-1/2	450-1/2
5/8"	400-5/8	450-5/8
3/4"	400-3/4	450-3/4
13/16"	400-13/16	450-13/16
7/8"	400-7/8	450-7/8
15/16"	400-15/16	450-15/16
1"	400-1	450-1

450 Series Equipped with threaded grease fitting



Pillow Block Bearings

500 Series Pillow Blocks



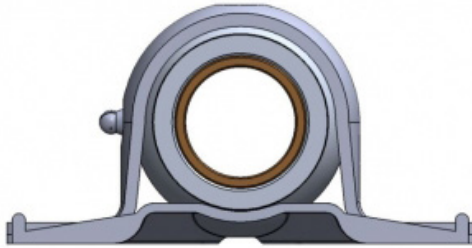
These units are self-aligning due to the spherical construction of the inner housing which conforms to a spherical socket formed in the outer housing. The porous bronze bearing has an oil capacity of one-third of its volume. The large oil reservoir with the close fitting wick which surrounds the bearing, provides ample lubrication at all times. The top strap is made of a 12 gauge steel. The base is sprung slightly when the bolts are tightened which insures proper pressure between the inner and outer housing so as to permit free self-alignment and yet maintain the inner housing in correct position. When the pillow block is furnished with a grease fitting, then the bronze bearing is provided with grease outlet. Finished with clear zinc plating for corrosion resistance.

Shaft Size	Oil Cup P/N's			Oil and Felt Filled Cavity	Grease Zerk P/N's		
	Out the Top	Out the Side	Out the Bottom		Out the Top	Out the Side	Out the Bottom
1/2"	500/505-1/2	500/510-1/2	500/515-1/2	500/520-1/2	500/525-1/2	500/530-1/2	500/535-1/2
5/8"	500/505-5/8	500/510-5/8	500/515-5/8	500/520-5/8	500/525-5/8	500/530-5/8	500/535-5/8
3/4"	500/505-3/4	500/510-3/4	500/515-3/4	500/520-3/4	500/525-3/4	500/530-3/4	500/535-3/4
13/16"	500/505-13/16	500/510-13/16	500/515-13/16	500/520-13/16	500/525-13/16	500/530-13/16	500/535-13/16
7/8"	500/505-7/8	500/510-7/8	500/515-7/8	500/520-7/8	500/525-7/8	500/530-7/8	500/535-7/8
15/16"	500/505-15/16	500/510-15/16	500/515-15/16	500/520-15/16	500/525-15/16	500/530-15/16	500/535-15/16
1"	500/505-1	500/510-1	500/515-1	500/520-1	500/525-1	500/530-1	500/535-1

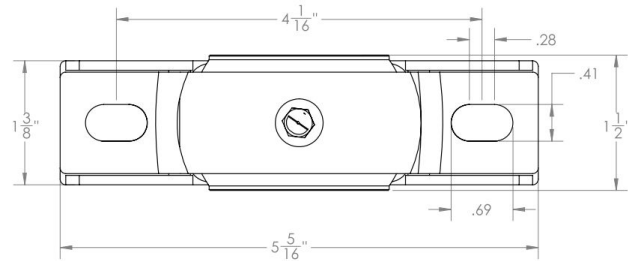
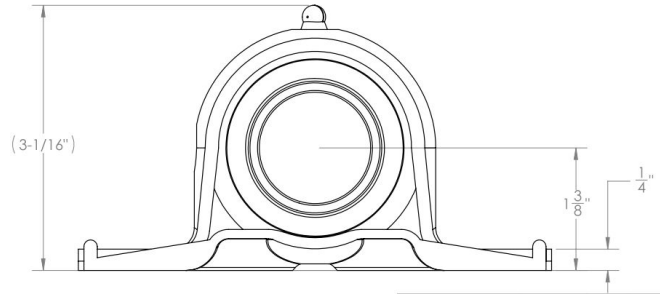
700 Series Heavy Duty Pillow Blocks



Style 700



Style 730

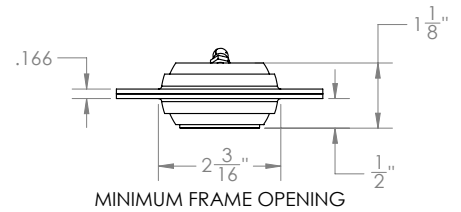
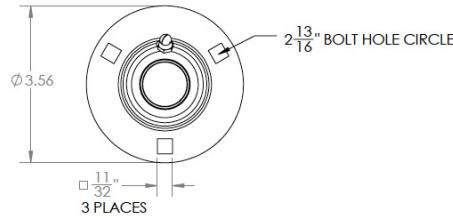
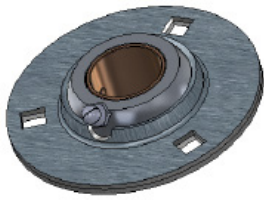


These rugged self-aligning Pillow Blocks were designed for applications where heavy loads and higher speeds are encountered. These units are self-aligning due to the spherical construction of the inner housing which conforms to a spherical socket formed in the outer housing. The base is sprung slightly when the bolts are tightened which insures proper pressure between inner and outer housing so as to permit free self-alignment and yet maintain the inner housing in correct position. The outer housing or top strap is made from 10 gauge steel and the base from 12 gauge. They can be installed either in horizontal or vertical position. Standard units are supplied with threaded grease fittings and the units have large grease reservoirs. Finished with clear zinc plating for corrosion resistance.

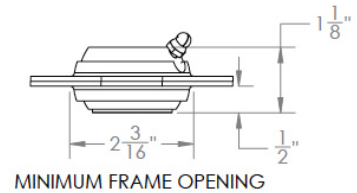
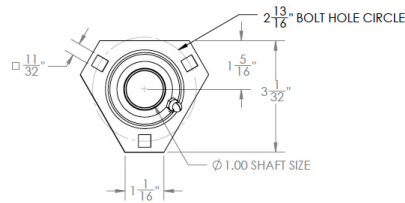
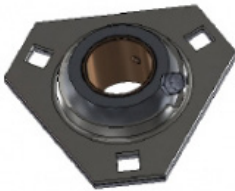
Shaft Size	Part Numbers	
	700 Series	730 Series
7/8"	700-7/8	730-7/8
1"	700-1	730-1
1-1/16"	700-1-1/16	730-1-1/16
1-1/8"	700-1-1/8	730-1-1/8
1-3/16"	700-1-3/16	730-1-3/16
1-1/4"	700-1-1/4	730-1-1/4
1-3/8"	700-1-3/8	730-1-3/8

Flange Mounted Bronze Bushed Bearings

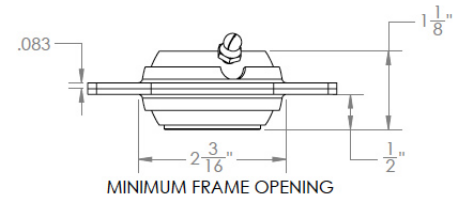
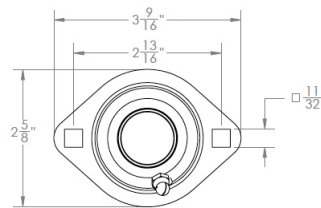
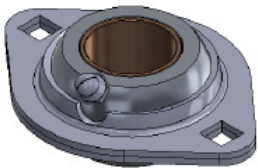
600 Series Flang-gee Bearing Assemblies



610 Series Flang-gee Bearing Assemblies



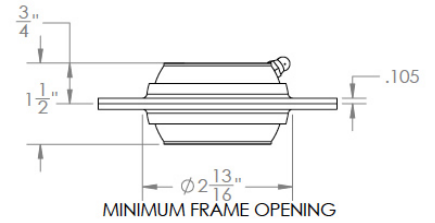
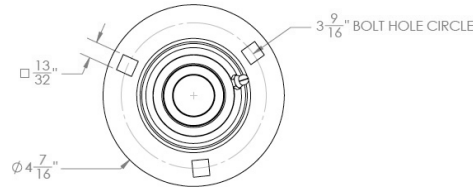
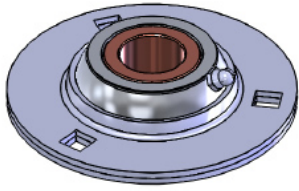
620 Series Flang-gee Bearing Assemblies



- **Self aligning** – The pressed steel housing consists of two identical self-aligning flanges. This housing has been designed to provide ample strength and self-aligning action for bearing assembly.
- **A frame opening** is required for installation as the unit protrudes thru the frame, plate, or panel on which it is installed. This is a very strong unit because the load is directly over the center of the two flanges.
- **Bearing** – High quality bronze graphitized bearings provide ample lubrication. Bearing has a flange to carry thrust load and provides self-lubrication bearing surface for thrust collar.
- **Grease lubricated** – The large lubricant reservoir is filled through standard threaded grease fittings.
- **UHMW-PE bearings also available**

Shaft Size	600 Series	610 Series	620 Series
1/2"	600-1/2	610-1/2	620-1/2
5/8"	600-5/8	610-5/8	620-5/8
3/4"	600-3/4	610-3/4	620-3/4
13/16"	600-13/16	610-13/16	620-13/16
7/8"	600-7/8	610-7/8	620-7/8
15/16"	600-15/16	610-15/16	620-15/16
1"	600-1	610-1	620-1
1-1/16"	600-1-1/16	610-1-1/16	620-1-1/16

800 Series Heavy Duty Flange-gee Bearing Assembly



- **Self aligning** – The pressed steel housing consists of two identical self-aligning 12 gauge flanges. This housing has been designed to provide ample strength and self-aligning action for bearing assembly.
- **A frame opening** is required for installation as the unit protrudes thru the frame, plate, or panel on which it is installed. This is a very strong unit because the load is directly over the center of the two flanges.
- **Bearing** – High quality bronze graphitized bearings provide ample lubrication.
- **Grease lubricated** – The large lubricant reservoir is filled through standard threaded grease fittings.
- **Easily Mounted in any position** – Horizontally, vertically or at any angle.
- **UHMW-PE bearings also available**

Shaft Size	Part Number
7/8"	800-7/8
1"	800-1
1-1/16"	800-1-1/16
1-1/8"	800-1-1/8
1-3/16"	800-1-3/16
1-1/4"	800-1-1/4
1-3/8"	800-1-3/8

The bearing unit is interchangeable for use with any of our standard 62MM flanges.

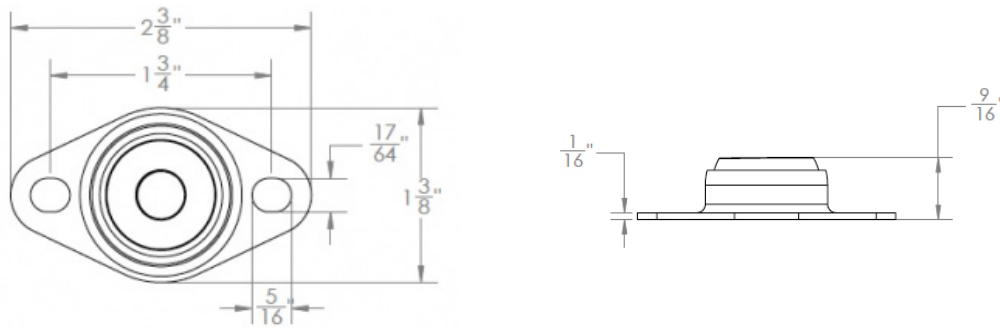
UHMW-PE Bearings



- Available with 1/2" to 2" I.D.'s
- Spherical or Cylindrical O.D.'s up to 62MM
- Stock or made to your specifications.
- Variety of mounting styles to choose from, including stainless steel.
- Lightweight, chemical/corrosion/moisture resistant, noise absorbing, self lubricating.
- Great for use on food grade equipment. Meets FDA, USDA and 3-A Dairy guidelines.
- Our main line is UHMW-PE, but we can make out of various materials.

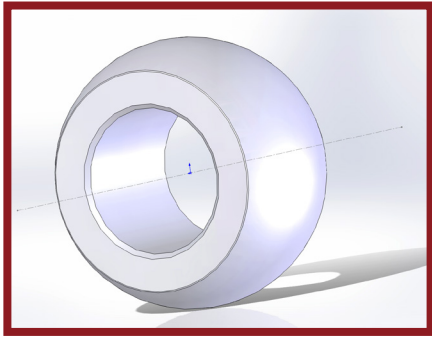
UHMW-PE Junior Flange Side Mounts

U160-Series

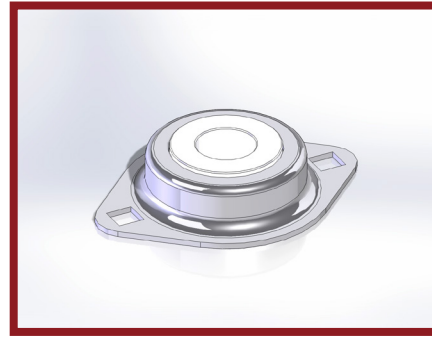


Part No.	Shaft Size
U160-1/4	1/4"
U160-5/16	5/16"
U160-3/8	3/8"
U160-1/2	1/2"

UHMW- PE Bearings



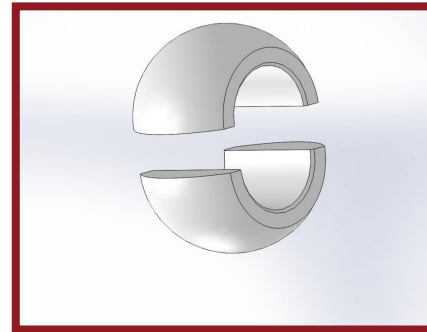
UHMW-PE Flush Mount Bearing Assemblies



Part No.	Shaft Size	Bearing O.D.
U40MMSPH-1/2	1/2"	40MM
U40MMSPH-5/8	5/8"	40MM
U40MMSPH-3/4	3/4"	40MM
U40MMSPH-1	1"	40MM
U47MMSPH-1/2	1/2"	47MM
U47MMSPH-5/8	5/8"	47MM
U47MMSPH-3/4	3/4"	47MM
U47MMSPH-.770	3/4" oversized	47MM
U47MMSPH-1/2	1"	47MM
U47MMSPH-1.020	1" oversized	47MM
U47MMSPH-1-1/4	1-1/4"	47MM
U52MMSPH-7/8	7/8"	52MM
U52MMSPH-1	1"	52MM
U52MMSPH-1-1/8	1-1/8"	52MM
U62MMSPH-1	1"	62MM
U62MMSPH-1-1/8	1-1/8"	62MM
U62MMSPH1-1/4	1-1/4"	62MM
U62MMSPH-1-5/16	1-5/16"	62MM
U62MMSPH-1-3/8	1-3/8"	62MM

Part No.	Shaft Size	Flush Mount Housing
U30-2-MFM-1/4	1/4"	30-2-MFM
U30-2-MFM-3/8	3/8"	30-2-MFM
U30-2-MFM-1/2	1/2"	30-2-MFM
U40-2-MFM-1/2	1/2"	40-2-MFM
U40-2-MFM-5/8	5/8"	40-2-MFM
U40-2-MFM-3/4	3/4"	40-2-MFM
U40-2-MFM-1	1"	40-2-MFM
U47-2-MFM-1/2	1/2"	47-2-MFM
U47-2-MFM-5/8	5/8"	47-2-MFM
U47-2-MFM-3/4	3/4"	47-2-MFM
U47-2-MFM-1	1"	47-2-MFM
U47-2-MFM-1-1/4	1-1/4"	47-2-MFM
U52-2-MFM-3/4	3/4"	52-2-MFM
U52-2-MFM-1	1"	52-2-MFM
U62-2-MFM-1	1"	62-2-MFM
U62-2-MFM-1-1/4	1-1/4"	62-2-MFM
U62-2-MFM-1-1/2	1-1/2"	62-2-MFM

Spherical Split two-piece bearings



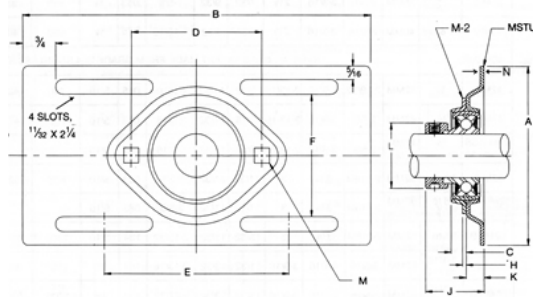
Replacing one piece bearings in hard to access or complex locations can be very time consuming. Split Bearings help reduce downtime in these hard to access locations by being able to remove a replace just one unit on a long chain of parts.

- Our Split Bearings can be mounted in most of Manitou's flanges and pillow blocks.
- UHMW-PE bearings paired with Stainless Steel housings are preferred by industries for use in hygienic environments.
- Our standard product line is made from UHMW-PE. They are ideal for moist conditions and are heat tolerant up to 180 degrees F. We can also make them out of alternative materials.
- Offering various sizes from 40MM-62MM Spherical O.D. with bores 1/2" – 1-1/2"

Please call to discuss your application, we would be happy to assist in what will best fit your needs!

Take-Up Units

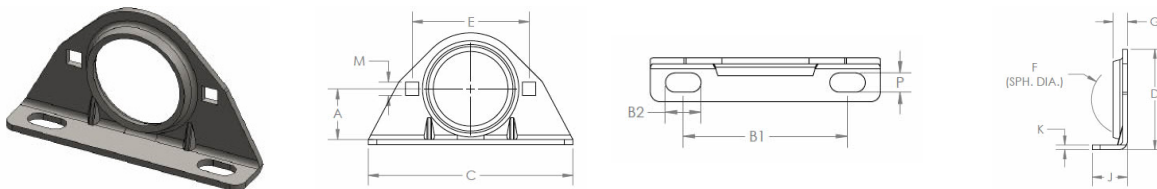
These light duty pressed steel belt tightening and shaft adjustment units are designed to be used with standard 2-bolt flanges and ball bearings with spherical OD. Two-Bolt flanges sold separately. Supplied with clear zinc plating for corrosion resistance.



Part No.	Shaft Size	A	B	C	D	E	F	H	J	K	L	M	Radial Load Rating	Mating Flange No.
52 MSTU-ZP	13/16, 7/8, 15/16, 1	4-1/8	8	11/32	3	4-1/4	2-13/16	.083	1-5/16	13/32	1-1/2	11/32	800	52M-2ZP
62 MSTU-ZP	1-1/16, 1-1/8, 1-3/16, 1-1/4	4-1/2	8	11/32	3-9/16	4-1/4	3-3/16	.104	1-15/32	7/16	1-3/4	13/32	1100	62M-2ZP

Pillow Block Stands

Our Pillow Block Stands are used where speeds are moderate and loads are medium. These are used in place of the expensive Cast Iron or Malleable Iron Pillow Block units, under the above conditions. The flanges listed below are standard and dimensionally have the same distance between bolt hole centers and base to center line. A Two-Bolt flange is required to retain ball bearing, bolt together (ordered separately). All Pillow Block Stands are finished with clear zinc plating.



Part No.	A	B1	B2	C	D	E	F	G	J	K	M	P	Mating 2 Bolt Flange No.
40MPB-STAND-ZP	1-3/16	3-5/8	5/8	4-7/8	2-11/32	2-1/2	40MM	9/32	1	.104	9/32	13/32	40M-2ZP
47MPB-STAND-ZP	1-5/16	3-13/16	5/8	5	2-11/16	2-13/16	47MM	5/16	1	.119	11/32	13/32	47M-2ZP
52MPB-STAND-ZP	1-7/16	3-3/4	13/16	5-1/4	2-7/8	3	52MM	11/32	1	.134	11/32	7/16	52M-2ZP
62MPB-STAND-ZP	1-11/16	4-11/16	25/32	6-1/4	3-11/32	3-9/16	62MM	11/32	1-3/16	.134	13/32	9/16	62M-2ZP
72MPB-STAND-ZP	1-7/8	5	7/8	6-1/2	3-23/32	3-15/16	72MM	7/16	1-3/8	.149	13/32	9/16	72M-2ZP

CNC Turning and SolidWorks Design Services

In house Precision CNC turning. We turn custom bearings to fit in our stamped steel and stainless steel bearing housings. We have the capability to bar feed parts up to 3" in diameter. Custom bearings, rollers and other turned parts can be made out of a variety of materials including bronze, UHMW-PE, steel, aluminum and a various other materials of your choice.

We can work with you to help create what will best fit your application using SolidWorks 3D CAD design software.

If you have a special need, just submit us your drawing and we will be glad to quote.



Parts Made to Your Prints



Custom Steel Stamping And Precision CNC Turning

Call us @ 1-800-894-1509 , E-mail us or Upload your drawing regarding your products. Most likely we can meet your specifications and we look forward to working with you!

Porous Bronze Bushings

Oil-filled, self lubricating, porous bronze sleeve and flange type bearings.

These are the same fine quality bushings which we use in our pillow blocks and flange mounted bearing assemblies.

DIMENSIONS

PART NUMBER	Diameter Inside	Diameter Outside	Length
	3/16	5/16	
P110-6	.1895	.3155	3/4
	1/4	3/8	
P120-4	.252	.378	1/2
	1/4	1/2	
AA-519-1	.252	.5015	1/2
	3/8	1/2	
P140-3	.377	.503	3/8
P140-4	.377	.503	1/2
P140-5	.377	.503	5/8
P140-6	.377	.503	3/4
P140-12	.377	.503	1/2
	3/8	5/8	
P150-6	.377	.628	3/4
	1/2	5/8	
P165-4	.502	.628	1/2
P165-5	.502	.628	5/8
P165-6	.502	.628	3/4
P165-8	.502	.628	1
P165-10	.502	.628	1-1/4
	1/2	11/16	
P170-6	.502	.6905	3/4
P170-8	.502	.6905	1
	1/2	3/4	
P175-4	.502	.753	1/2
P175-6	.502	.753	3/4
P175-7	.502	.753	7/8
P175-8	.502	.753	1
P175-10	.502	.753	1-1/4
P175-12	.502	.753	1-1/2
	5/8	3/4	
P180-4	.6270	.753	1/2
P180-5	.6270	.753	5/8
P180-6	.6270	.753	3/4
P180-8	.6270	.753	1
P180-10	.6270	.753	1-1/4

DIMENSIONS

PART NUMBER	Diameter Inside	Diameter Outside	Length
	5/8	7/8	
P190-4	.6270	.878	1/2
P190-5	.6270	.878	5/8
P190-8	.6270	.878	1
P190-9	.6270	.878	1-1/8
P190-1-7/16	.6270	.878	1-7/16
	11/16	7/8	
P195-6	.690	.878	3/4
	3/4	7/8	
P200-5	.7525	.878	5/8
P200-6	.7525	.878	3/4
P200-7	.7525	.878	7/8
P200-8	.7525	.878	1
P200-12	.7525	.878	1-1/2
P200-13	.7525	.878	1-5/8
	3/4	1	
P210-4	.7525	1.004	1/2
P210-6	.7525	1.004	3/4
P210-7	.7525	1.004	7/8
P210-8	.7525	1.004	1
P210-9	.7525	1.004	1-1/8
P210-10	.7525	1.004	1-1/4
P210-12	.7525	1.004	1-1/2
P210-16	.7525	1.004	2
	13/16	1	
P215-017	.815	1.004	1-1/16
	7/8	1	
P220-7	.878	1.004	7/8
P220-8	.878	1.004	1
P220-017	.878	1.004	1-1/16
P220-10	.878	1.004	1-1/4
	7/8	1-1/8	
P230-4	.878	1.128	1/2
P230-7	.878	1.128	7/8
P230-8	.878	1.128	1
P230-10	.878	1.128	1-1/4
P230-12	.878	1.128	1-1/2
	15/16	1-3/16	
P233-017	.940	1.1905	1-1/16

DIMENSIONS

PART NUMBER	Diameter Inside	Diameter Outside	Length
-------------	-----------------	------------------	--------

	1	1-1/8	
P235-8	1.003	1.129	1
P235-017	1.003	1.129	1-1/16
P235-10	1.003	1.129	1-1/4
P235-12	1.003	1.129	1-1/2

	1	1-1/2	
AA-1511-5	1.003	1.5045	1-1/2

	1	1-3/16	
P240-6	1.004	1.1905	3/4
P240-8	1.004	1.1905	1
P240-017	1.004	1.1905	1-1/16

	1	1-1/4	
P245-5	1.004	1.254	5/8
P245-6	1.004	1.254	3/4
P245-8	1.004	1.254	1
P245-9	1.004	1.254	1-1/8
P245-10	1.004	1.254	1-1/4
P245-11	1.004	1.254	1-3/8
P245-12	1.004	1.254	1-1/2
P245-14	1.004	1.254	1-3/4
P245-16	1.004	1.254	2

	1	1-5/16	
P250-6	1.004	1.316	3/4
P250-12	1.004	1.316	1-1/2

	1	1-3/8	
P255-12	1.003	1.377	1-1/2

	1-1/16	1-3/16	
P260-017	1.064	1.1905	1-1/16

	1-1/8	1-1/2	
AA-1502-3	1.127	1.5035	1-1/2

	1-1/8	1-5/16	
P270-12	1.1285	1.316	1-1/2
P270-16	1.1285	1.316	2

	1-1/8	1-3/8	
P275-12	1.1285	1.3785	1-1/2
P275-16	1.1285	1.3785	2

	1-3/16	1-1/2	
P280-12	1.1905	1.504	1-1/2

DIMENSIONS

PART NUMBER	Diameter Inside	Diameter Outside	Length
-------------	-----------------	------------------	--------

	1-1/4	1-3/8	
P283-8	1.254	1.3785	1
P283-10	1.254	1.3785	1-1/4

	1-1/4	1-1/2	
P285-7	1.254	1.503	7/8
P285-8	1.254	1.503	1
P285-10	1.254	1.503	1-1/4
P285-12	1.254	1.503	1-1/2
P285-14	1.254	1.503	1-3/4

	1-1/4	1-9/16	
P287-12	1.252	1.565	1-1/2

	1-1/4	1-5/8	
P290-8	1.254	1.628	1

	1-3/8	1-5/8	
P295-8	1.3785	1.629	1
P295-12	1.3785	1.629	1-1/2

	1-1/2	1-3/4	
P300-4	1.504	1.754	1/2
P300-8	1.504	1.754	1
P300-12	1.504	1.754	1-1/2
P300-14	1.504	1.754	1-3/4
P300-16	1.504	1.754	2

	1-3/4	2	
P310-16	1.754	2.004	2

	1-7/8	2-1/4	
P315-6	1.878	2.254	3/4

	2	2-1/4	
P330-6	2.004	2.254	3/4
P330-8	2.004	2.254	1
P330-16	2.004	2.254	2

	2-1/2	2-3/4	
P340-16	2.505	2.754	2

FLANGED BUSHINGS

DIMENSIONS

PART NUMBER	Diameter Inside	Diameter Outside	Length	Flange OD	Thick
FF-520-10	.3765	.502	3/8	5/8	1/16
F-620-1	.502	.627	1/2	7/8	1/16
F-620-2	.502	.627	3/4	7/8	1/16
F-620-4	.502	.627	1-1/8	7/8	1/16
F-703	.6265	.7525	1-1/8	1	3/32
F-703-6	.6265	.7525	1-1/4	1	3/32
F-718-1	.6275	.7525	1/2	7/8	1/16
F-843-2	.627	.877	1	1	1/8
F-911-4	.7505	.941	1	1-1/8	3/32
F-1015-2	.753	1.003	3/4	1-1/8	1/8
F-1001	.8765	1.003	1	1-1/4	1/8
F-1001-X	.8765	1.003	1-1/8	1-1/4	1/16
F-1102-X	.877	1.128	1	1-3/8	1/8
F-1207-5	1.002	1.252	3/4	1-5/8	1/8
FL-102-X	1.003	1.254	7/8	1-1/2	1/8
F-1314-2	1.127	1.377	1	1-3/4	1/8

Manitou Stamping Interchange Table

The flanges below are listed with part numbers denoting clear zinc plating as the finish. Also available unfinished "R" or with yellow dichromate "YZP." Other finishes available upon request. Only parts listed where interchange is available.

	Manitou	Fafnir	Timken	SKF	NTN	Peer
Two Bolt:	40M-2ZP	40MST-ZP	40MST	PFT40	PFL203	PFL-3Z
	47M-2ZP	47MST-ZP	47MST	PFT47	PFL204	PFL-4Z
	52M-2ZP	T52MST-ZP	52MST	PFT52	PFL205	PFL-5Z
	52M-2BZP	52MST-3ZP	52MST-3			
	62M-2ZP	62MST-ZP	62MST	PFT62	PFL206	PFL-6Z
	62M-2BZP	62MST-2ZP	62MST-3			
	72M-2ZP	72MST-ZP	72MST	PFT72	PFL207	PFL-7Z
Three Bolt:	72M-2BZP	72MST-3ZP				
	40MM-3ZP	40MS-ZP	40MS	PF40	PF203	PF-3Z
	47MM-3ZP	47MS-ZP	47MS	PF47	PF204	PF-4Z
	52MM-3ZP	52MS-ZP	52MS	PF52	PF205	PF-5Z
	52MM-3EZP	52MS-2ZP	52MS-2			
	62MM-3ZP	62MS-ZP	62MS	PG62	PF206	PF-6Z
	62MM-3BZP	62MS-4ZP				
Three Bolt Triangular:	72MM-3ZP	72MS-ZP	72MS	PF72	PF207	PF-7Z
	72MM-3CZP	72MS-7ZP				
	40MM-3TZP					PFT-3Z
	47MM-3TZP	47MSTR-ZP	47MSTR	PFD47		PFT-4Z
	52MM-3TZP	T52MSTR-ZP	52MSTR	PFD52		PFT-5Z
Three Bolt Relube:	62MM-3TZP	T62MSTR-ZP	62MSTR	PFD62		PFT-6Z
	72MM-3TZP	T72MSTR-ZP	72MSTR	PFD72		PFT-7Z
	52MM-3GZP	G52MSA-ZP	G52MSA			PF-5Z-TOPS-H
	52MM-3GPZP	G52MSB-ZP	G52MSB			PF-5Z-BOTS-G
	62MM-3GZP	TG62MSA-ZP	G62MSA			PF-6Z-TOPS-H
	62MM-3GPZP	TG62MSB-ZP	G62MSB			PF-6Z-BOTS-G
	62MM-3G-3ZP	G62MSA-3ZP	G62MSA-3			
Four Bolt:	62MM-3GP-3ZP	G62MSB-3ZP	G62MSB-3			
	72MM-3GZP	TG72MSA-ZP	G72MSA			PF-7Z-TOPS-H
	72MM-3GPZP	TG72MPB-ZP	G72MSB			PF-7Z-BOTS-G
	62MM-4ZP	62MS-2ZP	62MS-2			PFF-6Z
	72MM-4ZP	72MS-5ZP	72MS-5			PFF-7Z
	80MM-4ZP	80MS-ZP	80MS	PF80	PF208	PFF-8Z
	80MM-4SQZP	T80MS-SZP				
Four Bolt Relube:	85MM-4ZP	85MS-ZP	85MS		PF209	PFF-9Z
	85MM-4BSQZP	T85MS-SZP				
	90MM-4ZP	90MS-ZP	90MS			PFF-10Z
	100MM-4ZP					PFF-11Z
	80MM-4GZP	G80MSA-ZP	G80MSA			PFF-8Z-TOPS-H
	80MM-4GPZP	G80MSB-ZP	G80MSB			PFF-8Z-BOTS-G
	85MM-4GZP	G85MSA-ZP	G85MSA			PFF-9Z-TOPS-H
85MM-4GPZP	G85MSB-ZP	G85MSB			PFF-9Z-BOTS-G	
Pillow Blocks:	90MM-4GZP	G90MSA-ZP	G90MSA			PFF-10Z-TOPS-H
	90MM-4GPZP	G90MSB-ZP	G90MSB			PFF-10Z-BOTS-G
	100MM-4GZP	G100MSA-ZP	G100MSA			PFF-11Z-TOPS-H
	100MM-4GPZP	G100MSB-ZP	G100MSB			PFF-11Z-BOTS-G
	40MPB-ST-ZP	40PB-ZP	40PB	P40	PP203	PP-3Z
47MPB-ST-ZP	47PB-ZP	47PB	P47	PP204	PP-4Z	
52MPB-ST-ZP	52PB-ZP	52PB	P52	PP205	PP-5Z	
62MPB-ST-ZP	62PB-ZP	62PB	P62	PP206	PP-6Z	
72MPB-ST-ZP	72PB-ZP	72PB	P72	PP207	PP-7Z	
40MPB-STAND-ZP	40PBS-ZP	40PBS			PB-3Z	
47MPB-STAND-ZP	47PBS-ZP	47PBS			PB-4Z	
52MPB-STAND-ZP	52PBS-ZP	52PBS			PB-5Z	
62MPB-STAND-ZP	62PBS-ZP	62PBS			PB-6Z	
72MPB-STAND-ZP	72PBS-ZP	72PBS			PB-7Z	

“CONDITION OF SALE”

The following is made in lieu of all warranties, express or implied: Seller's only obligation shall be to replace such quantity of the product proved to be defective. Seller shall not be liable for any loss or damage, direct or consequential, arising out of the use of or the inability to use the product.

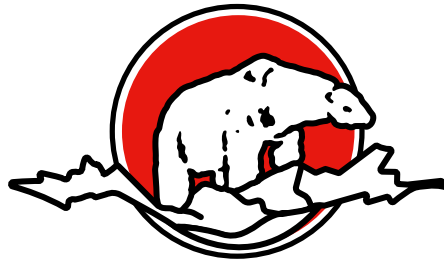
Before using, user shall determine the suitability of the product for his intended use, and user assumes all risk and liability whatsoever in connection therewith. The foregoing may not be changed except by an agreement signed.

SHIPPING DISCREPANCIES

To keep pricing low, quantities of 100 or more are counted by weight. Adjustments will not be made for shipments that are 2% less than invoiced quantities of 100-499 pieces, nor 1% less than quantities of 500 or more pieces.

RETURN POLICY

All returns must be authorized by Manitou Manufacturing Co. Please include the reason for return with your request. A \$25.00 or 20% restocking charge, whichever is greater, will be deducted from the credit issued on all returns other than shipping error. Customer is to pay the return freight if the return is due to customer error. Upon approved return you will be issued a RMA number, to be included with the parts. Parts must be returned in original condition to receive credit. Credit will be given upon inspection. No returns on special order items.



Manitou Mfg. Co.

STAMPED STEEL BEARING HOUSING SPECIALISTS



**QUALITY PARTS MADE
IN THE USA!**